

The Safe v 1.0 by Rock Your Mobile!



User Manual

The Safe v.1.0



User Manual



User Manual

Index

Index.....	2
General Description.....	3
Compatible Devices	3
Mobile Client.....	3
PC Client	3
How to register The Safe.....	3
Mobile Client Registration	3
PC Client Registration.....	3
How to install The Safe	3
Installing PC-Software	3
Installing Mobile Client	3
Working with The Safe PC Client.....	4
How to start	4
Application Features	4
General information	4
Create New Group.....	5
Create New Record	5
Create New Field.....	6
Delete an Item	7
Search Function.....	7
Settings of The Safe	9
Working with The Safe Mobile Client	11
How to start	11
Application Features	11
General information	11
Move to Folder	12
Create New Record	12
Create New Folder	13
Delete Record	13
The Safe Options	14
Settings of The Safe	15
Synchronization of PC and Mobile Client	16
Send Data to PC	16
Load Data from Inbox	16
How to uninstall The Safe.....	16
Uninstalling PC Client	16
Uninstalling Mobile Client.....	16



User Manual

General Description

The Safe Software gives you a possibility to keep your confidential information safely in your personal encrypted database. You have a possibility to set a password and change it any time for security reason. You can use the same information on your mobile and on your PC and transfer data between the clients.

Compatible Devices

Mobile Client

Mobile Client of The Safe is compatible with Series S60.2 phones:

Nokia 6600, Nokia 6620, Nokia 7610, Nokia 6260, Nokia 6670, Nokia 3230, Nokia 6630, Nokia 6680, Nokia 6681, Nokia 6682, Nokia N70, Nokia N90, Samsung SGH-D710, Samsung SGH-D720, Panasonic X700, Panasonic X800, Lenovo P930.

PC Client

PC Client of The Safe is compatible with Windows 2000/XP/2003

How to register The Safe

Mobile Client Registration

Trial Version of The Safe is fully functional with the exception it will stop working in 15 days. Registered Software will run only on the mobile with the IMEI provided.

PC Client Registration

PC Client of The Safe is freeware and needs no registration.

How to install The Safe

In the installation package of The Safe there are two packages: one package with PC Software and one package with mobile software.

Installing PC-Software

Please run setup.exe in order to install the software. Follow the installation instructions during the installation process.

Installing Mobile Client

In order to install the mobile client user should send the SIS File to the mobile using any of the methods of sending files that one knows and uses or with the help of Nokia PC Suite. The installation will start automatically after confirming that user would like to install The Safe v 1.0.



User Manual

Working with The Safe PC Client

How to start

The Safe Application can be opened in following ways:

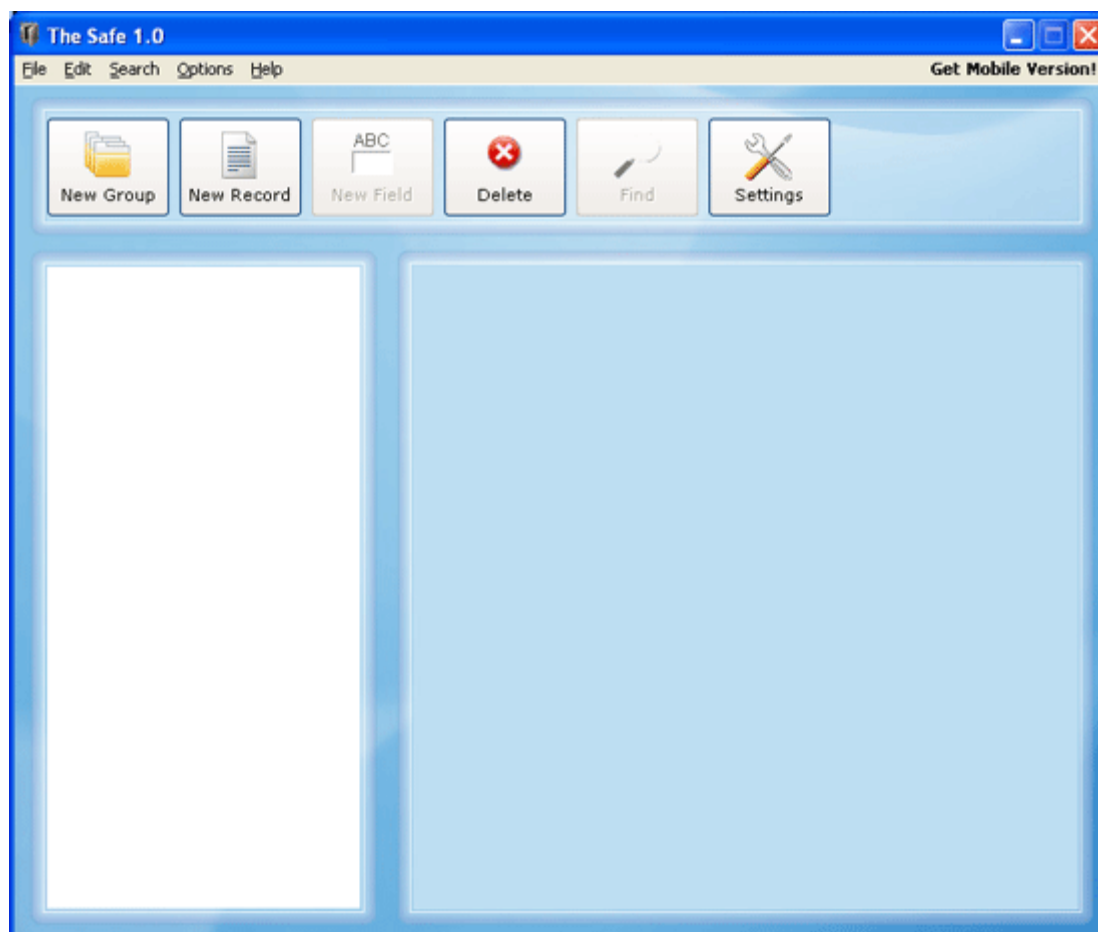
- Choosing the menu item: Menu Start → Programs → The Safe
- Clicking a mouse button on an Icon on the Toolbar or on the Desktop

Application Features

General information

The Safe data are sorted into groups. Every group has unlimited count of records in it.

Main screen of The Safe application looks like follows:





User Manual

Create New Group

All secure data in The Safe application are gathered into groups.



New Group can be created in two ways:

- One click on the New Group button in the Button Bar
- In the Toolbar (Menu) which is situated in the top part of the main window one can choose button Edit → New Group.

New Group form consists of two subfields which should be filled in by a user:

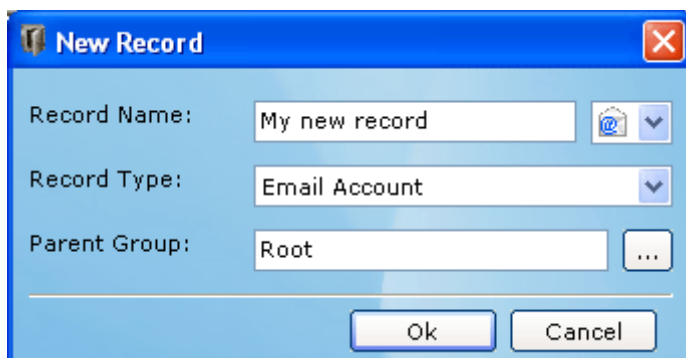
1. Group Name, where the user indicates name of the definite group
2. Parent Group, in which one indicates the group where the new one will be located

The drop-down menu with icons allows the user to choose definite icon for every group.

The button below is Parent Group Selecting button, which means that if there are already several groups and subgroups the user can select where the new one will be located.

Create New Record

Every group consists of items. The number of items in one group is unlimited.



New Record can be created in two ways:

- One click on the New Record button in the Button Bar



User Manual

- In the Toolbar (Menu) which is situated in the top part of the main window one can choose button Edit → New Record.

New Record form consists of three subfields which should be filled in by a user:

1. Record Name, where the user indicates name of the definite record
2. Record Type, depending on the type of information:
 - Default
 - Address
 - Bank Account
 - Calling Card
 - Car Info
 - Contact
 - Driver's License
 - Email Account
 - Insurance Policy
 - Internet Provider
 - Library Card
 - Note Card
 - Passport
 - Password
 - Payment Card
 - Social Security Number
 - Software Serial Number
 - Web Site
3. Parent Group, in which one indicates the location of the new record.

The drop-down menu with icons allows the user to choose definite icon for every record.

The button below is Parent Group Selecting button, which means that if there are already several groups and subgroups the user can select where the record will be located.

Create New Field

Every record consists of fields. The number of fields in one record is unlimited.

A screenshot of a 'New Field' dialog box. The dialog has a blue title bar with the text 'New Field' and a red close button. Inside, there are two labels: 'Field Name:' followed by a text input field containing 'My new field', and 'Field Type:' followed by a dropdown menu showing 'Text'. At the bottom, there are 'Ok' and 'Cancel' buttons.



User Manual

New Field button allows to add additional fields to every record according to the type of groups, which is very comfortable if one wants to write down information in case there is no corresponding field.

New Field can be created in two ways:

- One click on the New Field button in the Button Bar
- In the Toolbar (Menu) in the top part of the main window one can choose button Edit → New Field, only in case there are already existing groups and records.

New Field form consists of two subfields which should be filled in by a user:

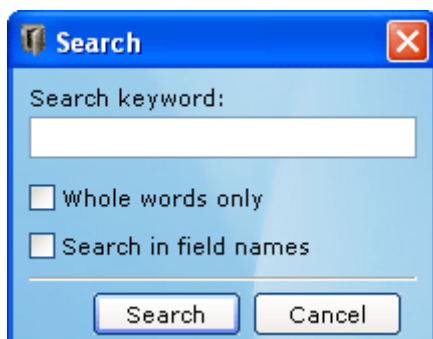
1. Field Type, in which one indicates type of the information, which will be in this field:
 - Text
 - Long text
 - EMail
 - Number
 - Phone
 - Date
 - Time
2. Field Name, where the user indicates name of the new field

Delete an Item

Any item can be deleted in two ways:

- One click on the Delete button in the Button Bar
- In the Toolbar (Menu) in the top part of the main window one can choose button Edit → Delete, only in case there are already existing items.

Search Function



User can search for information in two ways:

- One click on the Find button in the Button Bar
- In the Toolbar (Menu) which is situated in the top part of the main window one can choose button Search → Find (or Find Next, in case several items found).



User Manual

Search form shows that user can search for necessary items with the help of a keyword.

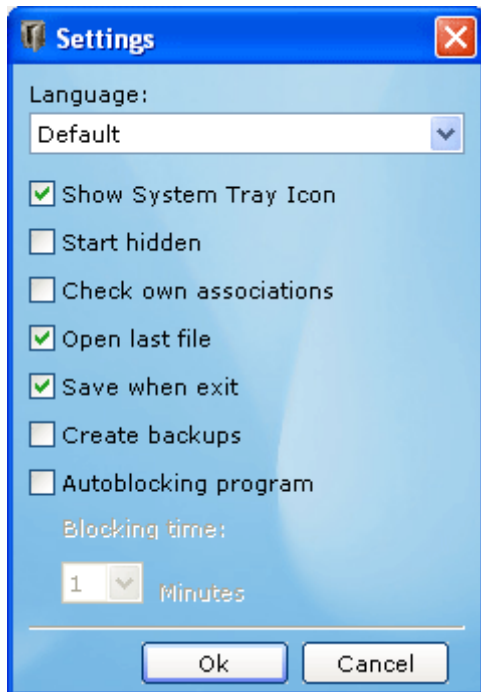
Check-box helps a user search for *Whole words only* (that means that the system will be looking for only whole words, but not parts), and *Search in field names* (this means that if there are several fields with the same name, the user can look through them all with help of the Toolbar (Menu) in the top part of the main form, clicking button Search → Find Next).



User Manual

Settings of The Safe

User can access Settings of The Safe with one click on the Settings button in the Button Bar.



Settings window consists of several fields:

Drop-down menu:

- Language

Checking-Box

- Show System Tray Icon
- Start Hidden
- Check own associations
- Open last file
- Save when exit
- Create backups
- Autoblocking program

Drop-down menu **Language** one can choose the language of The Safe Application from the list. Currently the following languages are available: English, German. The default language is English.

Show System Tray Icon when ticked fulfils function of showing icon of The Safe application on the Tray Icon.

Start Hidden – after being started the Application at once appears as an icon on the Tray Icon.

Check own associations – sets up file opening with .ss extension be default (default extension).



User Manual

Open last file – opens the last file the user has been working with before closing the application.

Save when exit – saves all files without additional actions of the user when exiting.

Create backups – creates backups (i.e. reserve copies) of the database, in case the user accidentally deletes it and wants to restore it. Only three previous backups will be preserved in the folders, others will be automatically deleted. Backups are located in the same folder with last saved database.

Autoblocking program – one can set time to autoblock the program, e.g. the user forgets to close the application, and then it will close by itself in determined by the user time.



User Manual

Working with The Safe Mobile Client

How to start

The Safe Application can be opened in following ways (depending on the phone):

- Clicking on the Menu button → The Safe
- Clicking on the Menu button → My Own → The Safe.

Application Features

General information

The Safe data are sorted into groups. Every group has unlimited count of records in it. Main screen of The Safe application looks like follows:



To enter The Safe application one should enter his personal password, which contains numbers and letters (the number of symbols is unlimited).

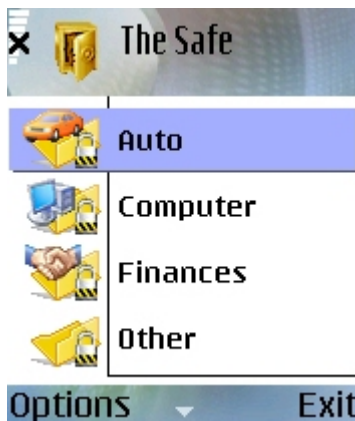
Initially the default password is letter “a”. In the process of application usage, one has to change the password in The Safe Settings for data security.

Attention!!! Don't forget to set the password, otherwise The Safe won't be safe.



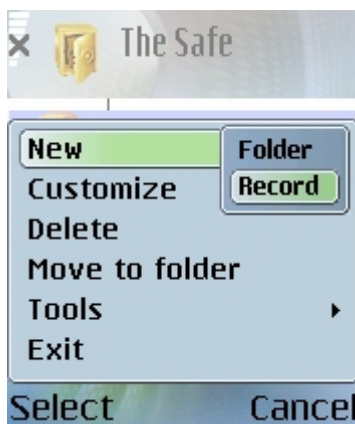
User Manual

Move to Folder



All secure data in The Safe application are gathered into definite Folders. There are already several existing folders, one can move to any of them.

Create New Record



Every Folder consists of items. The number of items in one Folder is unlimited.

To create New Record user has to choose Record Type depending on the type of information:

- Default
- Address
- Bank Account
- Calling Card
- Car Info
- Contact
- Driver's License
- Email Account
- Insurance Policy
- Internet Provider
- Library Card
- Note Card



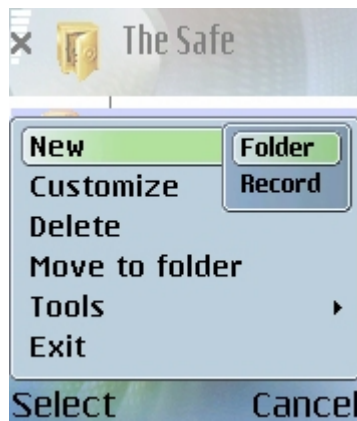
User Manual

- Passport
- Password
- Payment Card
- Social Security Number
- Software Serial Number
- Web Site

Every record has its definite icon.

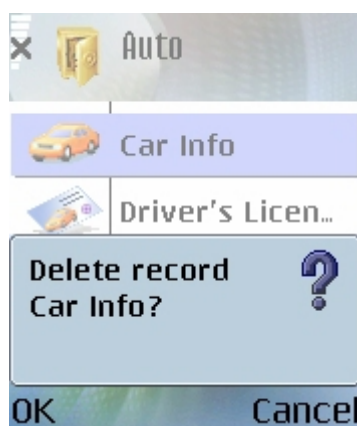
After new record has been created one can choose the folder to locate it.

Create New Folder



All secure data in The Safe application are gathered into definite Folders. To create New Folder one has to click on New Folder button, enter name of the folder and confirm it.

Delete Record



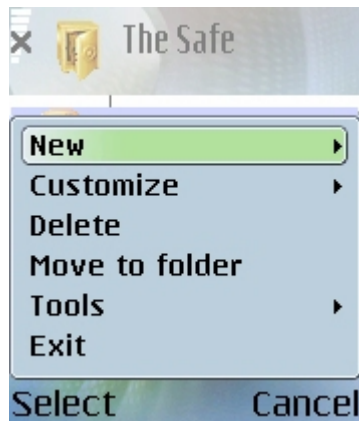
User can delete any item just marking it and clicking Delete Record button, after which the system will ask for confirmation.



User Manual

The Safe Options

User can access Options of The Safe with one click on the Options button.



New – creating new Folder or Record

Customize – modifying the details of records and folders; here user can Change Icon or Rename the item

Delete – removing of the current item

Move to folder – moving data into already existing folders

Tools – option where user can:

- synchronize data (Load data from Inbox or Send data to PC)
- modify Settings' fields, such as:
 - Password
 - Icons
 - Layout
 - Autolock After
 - Lock in Background
- see the About screen

Exit – exits the application



User Manual

Settings of The Safe

User can access Settings of The Safe with one click on the Settings button in the Button Bar.



Password – user can change his personal password any time he wants. It contains of numbers and letters (the number of symbols is unlimited).

Icons – for convenience one can chose the size of the icons on the screen, they can be *Large* or *Small*.

Layout – the space between the letters on the screen can be chosen as *Double Spaced* or *Compact*.



Autolock After - one can set time to autolock the program, e.g. the user forgets to close the phone on the table, and then it will close by itself in determined by the user time.

Lock in Background – when being in Background (i.e. the user at the moment doesn't work with the application, being busy with some other program) The Safe Autolocks after definite period of time.



User Manual

Synchronization of PC and Mobile Client

Send Data to PC

To send definite data to the computer, first of all, user has to start Bluetooth connection on the PC. Then user clicks Synchronize → Send Data to PC on the mobile phone. All information is received by the computer as .ts file. After getting the information user can arrange it on the computer in any file, or on the desktop. After receiving the information, user chooses the directory to save it. It is saved as data.ts file.

You can open this file with a right click, then choose Open with, where it is obligatory to tick the checkbox with "Always use the selected program to open this kind of file" and in the list of programs choose The Safe. After this, file can be always opened simply with a double click. Alternatively you can open data.ts file choosing button File → Open in the Toolbar (Menu) which is situated in the top part of the main window of The Safe application.

Load Data from Inbox

To send definite data to the mobile phone one can use any of the methods of sending files that knows and uses or with the help of Nokia PC Suite. All information is received by the phone as .ts file. After receiving all information is being located in user's Inbox. User clicks Synchronize → Load Data from Inbox on the mobile phone and all information is downloaded into The Safe application.

How to uninstall The Safe

Uninstalling PC Client

In order to uninstall PC Client of The Safe please go to the Control Panel, choose The Safe Control Application and uninstall it in the usual way.

Uninstalling Mobile Client

To uninstall the Mobile Client of The Safe go to the device's Control Panel and uninstall the application in a usual way.